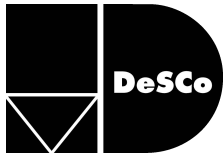


## i85 SERIES THERMAL WINDOW

<b>DESCRIPTION</b>	<b>PROJECT-OUT</b>	<b>CASEMENT</b>	<b>PROJECT-IN</b>
AAMA Designation ASTM	P-AW100	C-AW100	P-AW100
F588 (Forced Entry)	Grade 10	Grade 10	Grade 10
Air Infiltration	<0.1 CFM	<0.1 CFM	<0.1 CFM
Water Resistance Maximum	15 psf	15 psf	15 psf
Sash Size Operating	60" x 36"	36" x 60"	60" x 36"
Hardware	Cam handles 4 bar hinges	Cam Handles 4 bar hinges	Cam handles 4 bar hinges
Optional Screens	Wicket screens Fiberglass or aluminum mesh	Extruded frame Fiberglass or aluminum mesh	Extruded frame Fiberglass or aluminum mesh
Frame Depth	3 3/8" (85mm)		
Typical Material Thickness	0.094" with tubular design		
Frame Construction	Miter - crimp & epoxy weld on frames Mortise & tenon on mullions		
Sash Construction Glazing	Miter - crimp & epoxy weld		
Thickness	1" and 1 3/4"		

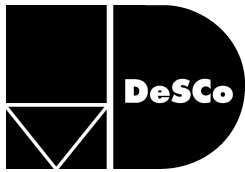


# i85 SERIES

## HARDWARE GUIDE

<b>DESCRIPTION</b>	<b>PROJECT-IN</b>	<b>PROJECT-OUT</b>	<b>CASEMENT</b>
Cam Handles	Standard	Standard	
Custodial Locks	Optional	Optional	Optional
Spring Latch	Optional		
Pole Ring Cam Handles	Optional		
Pushbars		Optional	
Locking Handles	Optional	Optional	Optional
4 Bar Hinges	Standard	Standard	Standard
Roto Operators		Optional	
Butt Hinges			Optional
Egress Hardware			Optional
Friction Adjustors	Optional	Optional	Optional
Limited Opening Device	Optional	Optional	Optional
Limit Stops	Optional	Optional	Optional
Screens	Optional	Optional	Optional
	Optional	Optional	Optional

To determine the recommended number of locks or combinations of locking and hinging hardware, contact DeSCO for assistance.



# i85 SERIES

---

## SIZE LIMITATIONS

	<b>MINIMUM SIZE</b>	<b>MAXIMUM SIZE</b>
<b>Project-in vent with cam handles</b>	14" wide x 17 3/4" high	60" wide x 36" high

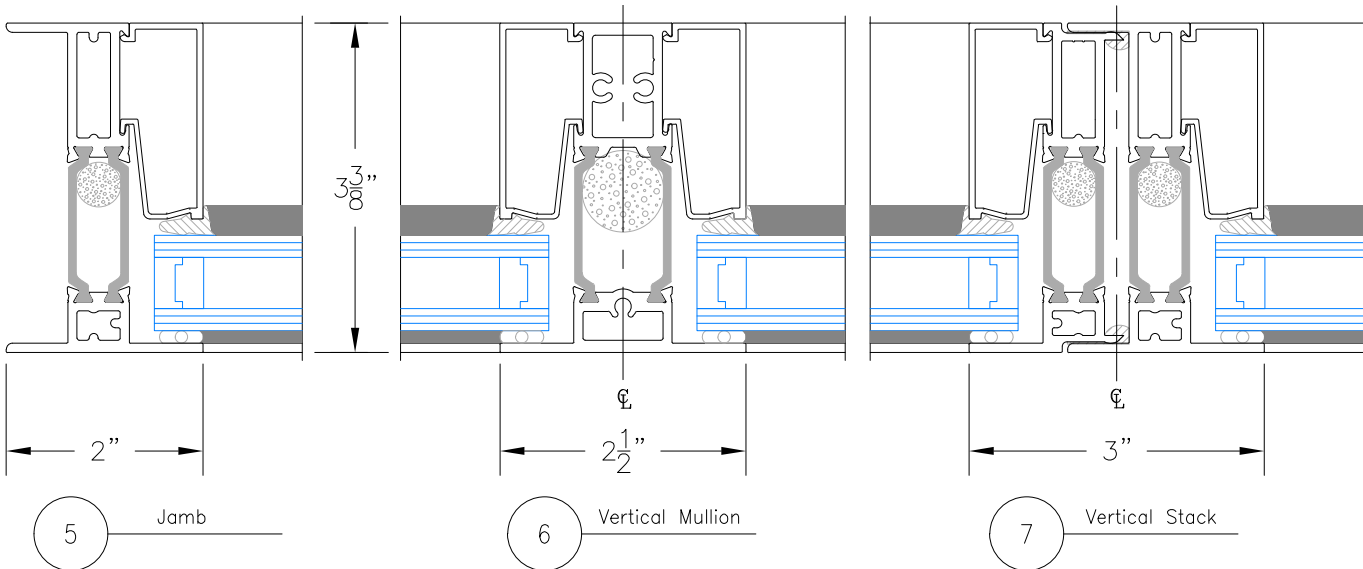
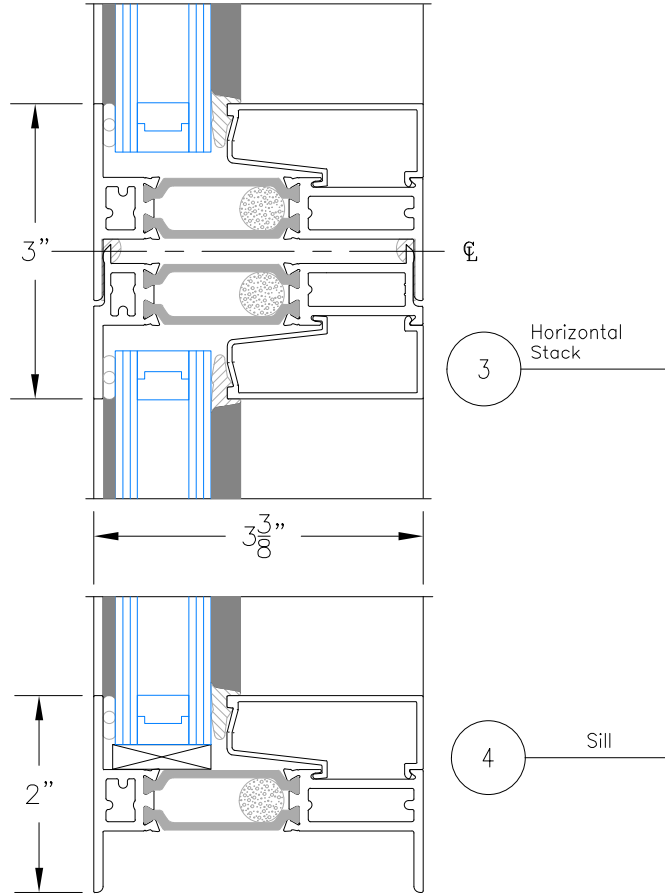
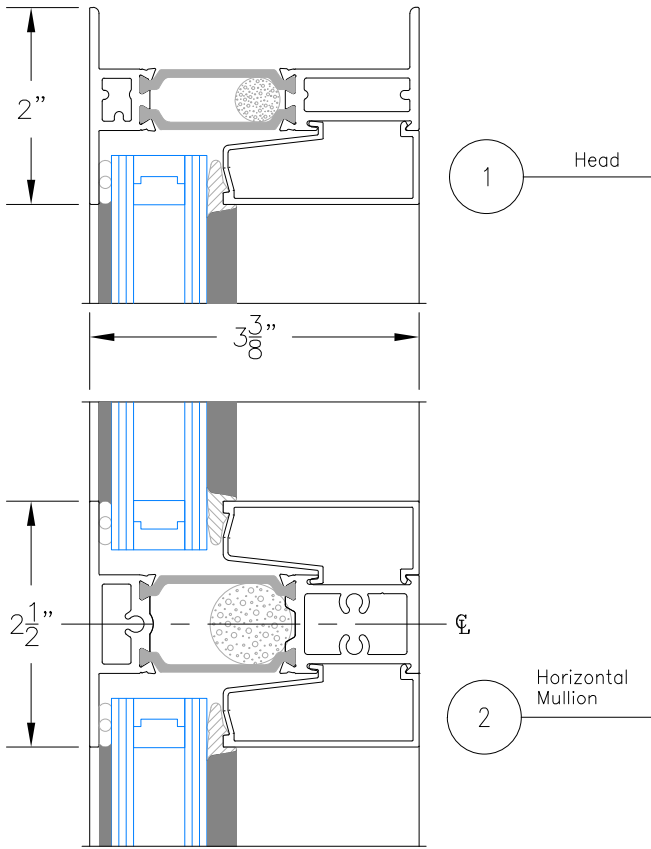
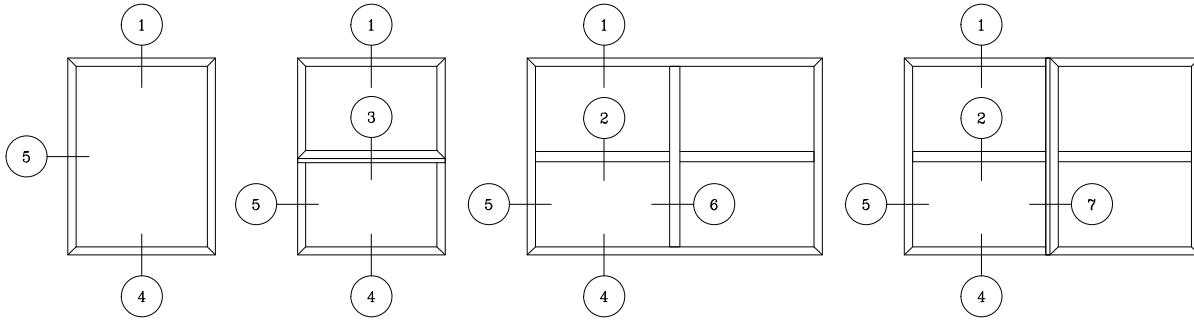
	<b>MINIMUM SIZE</b>	<b>MAXIMUM SIZE</b>
<b>Project-out vent with cam handles</b>	14" wide x 16" high	60" wide x 36" high
<b>Project-out vent with pushbars</b>	23" wide x 18 3/4" high	60" wide x 36" high
<b>Project-out vent with roto operators</b>	24" wide x 18 3/4" high	60" wide x 36" high

	<b>MINIMUM SIZE</b>	<b>MAXIMUM SIZE</b>
<b>Casement vent with roto operators</b>	20" wide x 24" high	36" wide x 60" high

### Egress vent

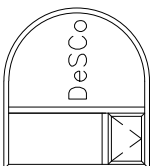
	<b>WIDTH</b>	<b>HEIGHT</b>	
<b>For 20" clear opening width</b>	28 1/2"	45"	5.7 square foot of opening
<b>For 22" clear opening width</b>	30 1/2"	42"	5.7 square foot of opening
<b>For 24" clear opening width</b>	32 1/2"	39"	5.7 square foot of opening

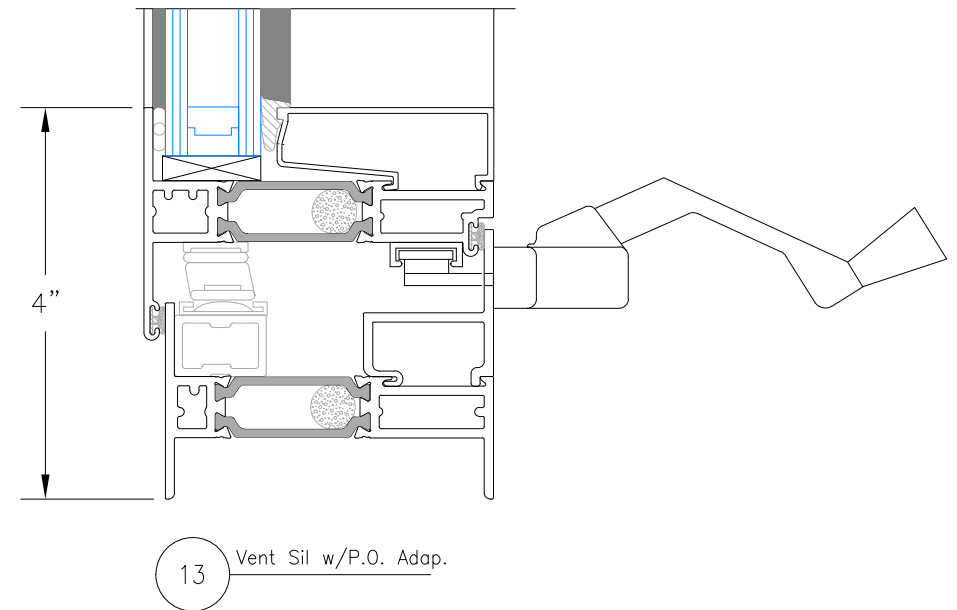
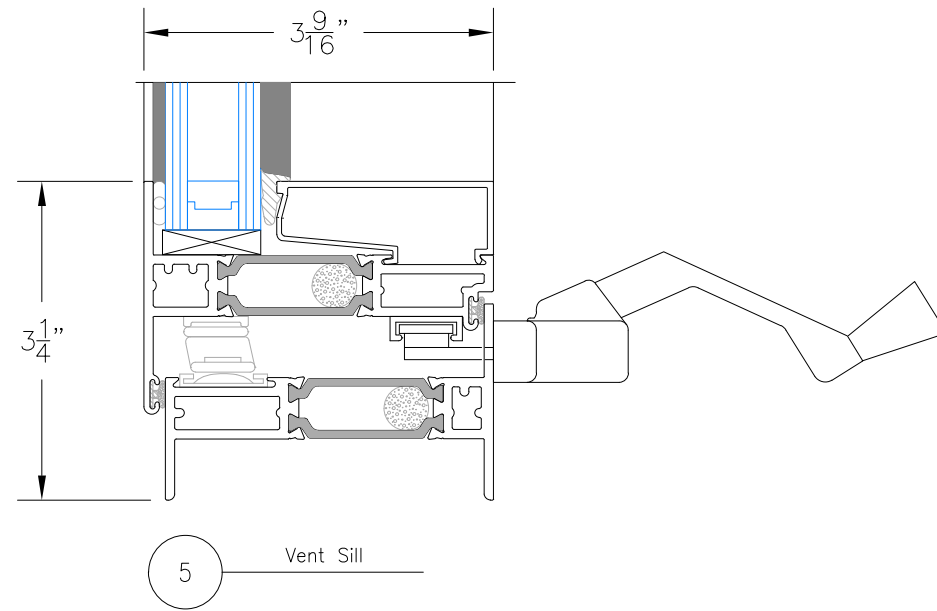
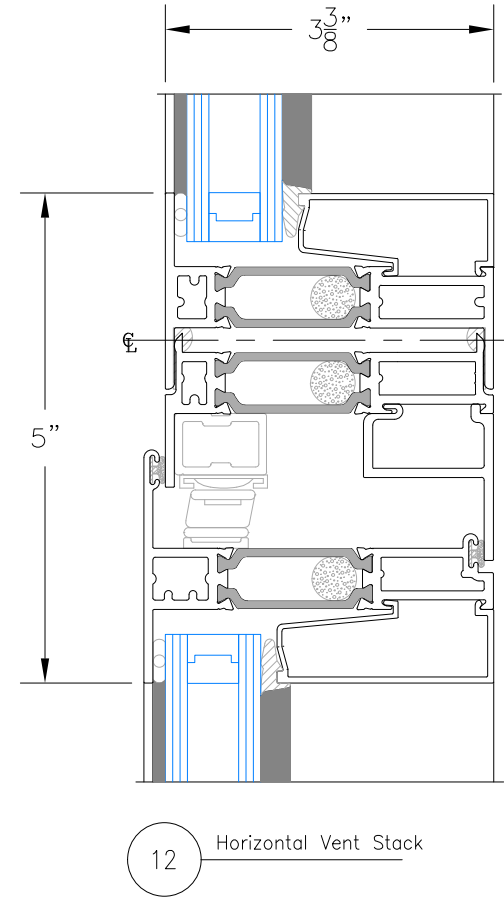
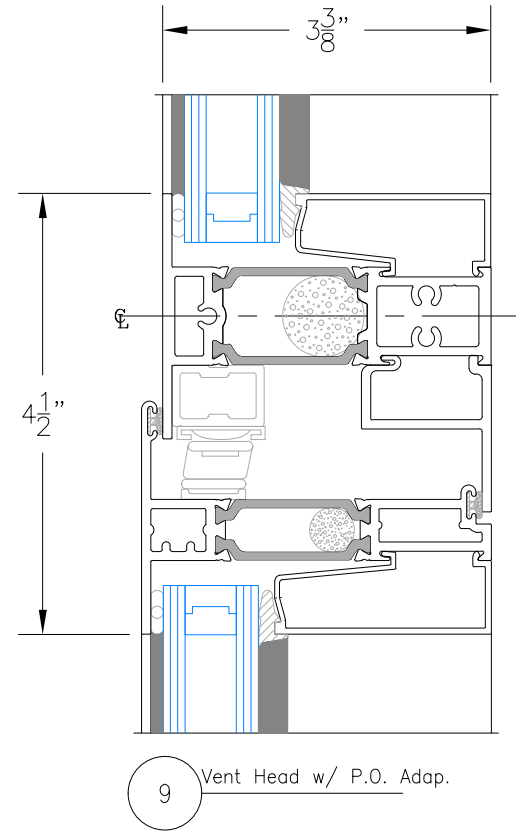
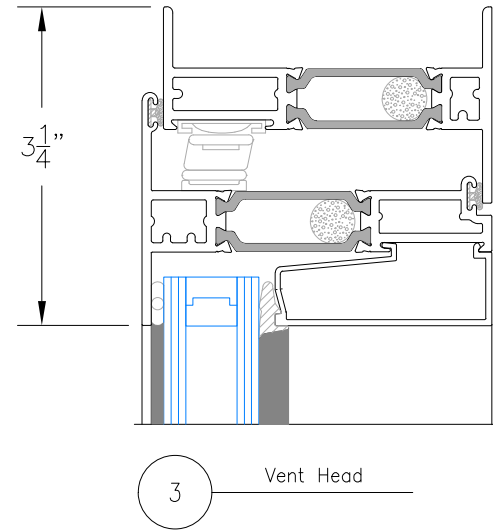
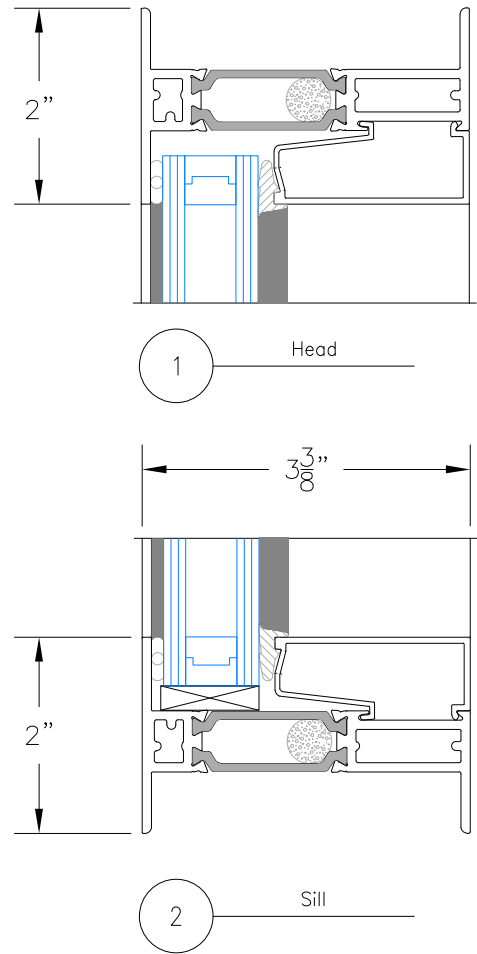
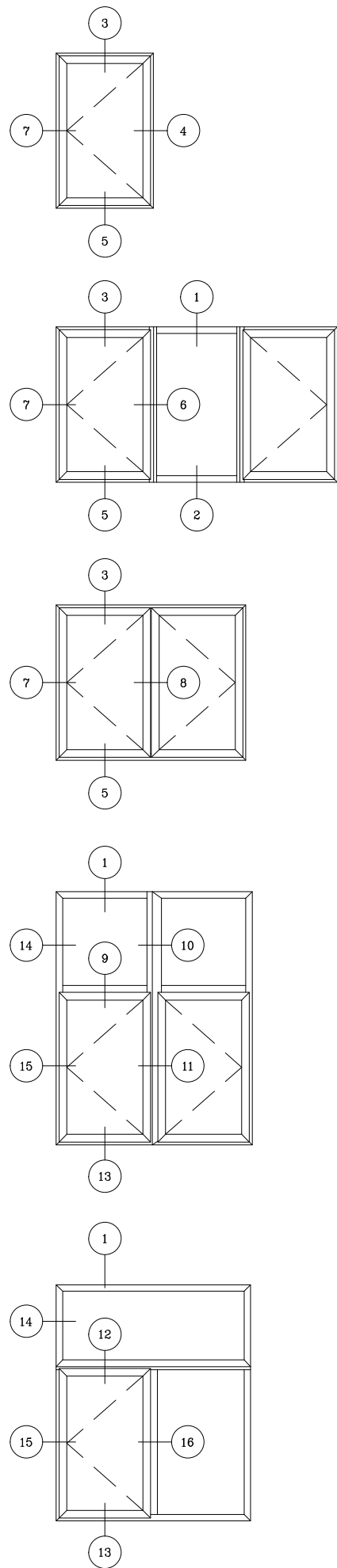
Consult your DeSCO representative for vent size limitations due to hardware limitations.



# i85 SERIES THERMAL WINDOW FIXED/STATIONARY

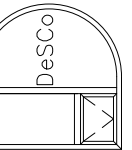
DeSCO Architectural, Inc.  
716 3rd Street SE  
De Smet, SD 57231  
Ph. 605-854-9126 Fax: 605-854-9127  
800-952-5534  
www.descoarc.com

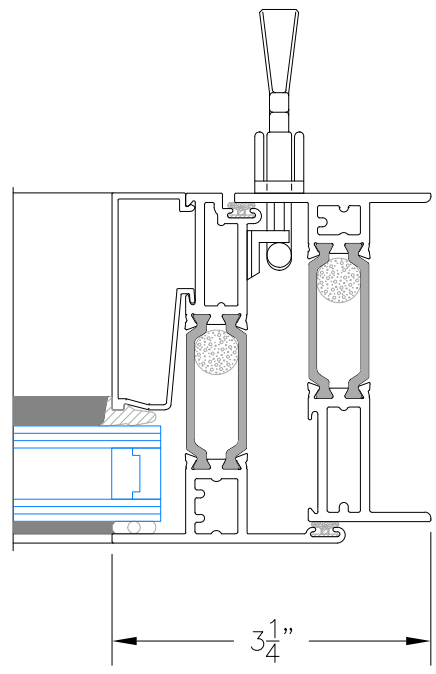




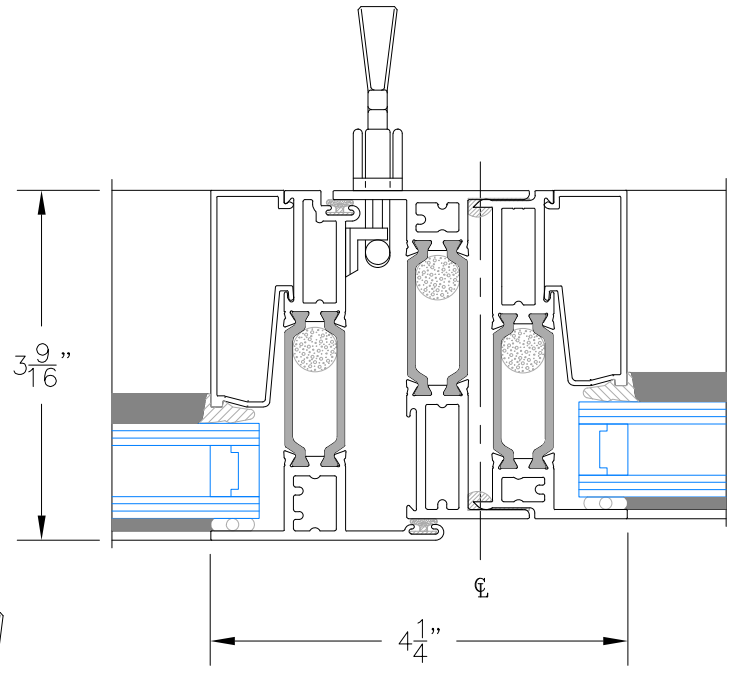
i85 SERIES THERMAL WINDOW  
CASEMENT

DeSCO Architectural, Inc.  
716 3rd Street SE  
De Smet, SD 57231  
Ph. 605-854-9126 Fax: 605-854-9127  
800-952-5534  
www.descoarc.com

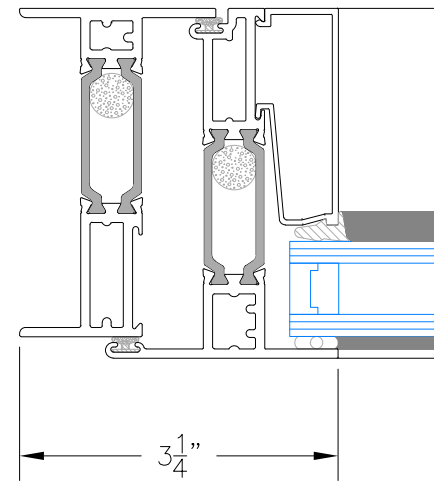




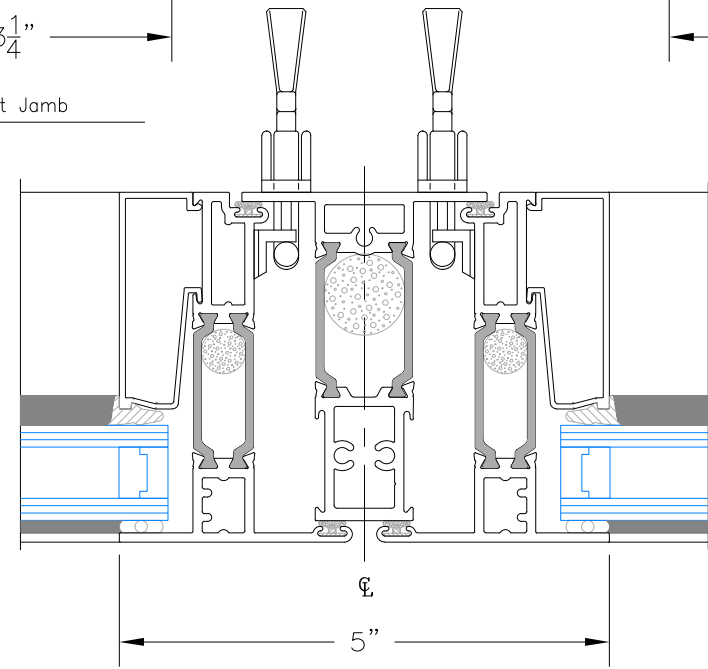
4 Vent Jamb



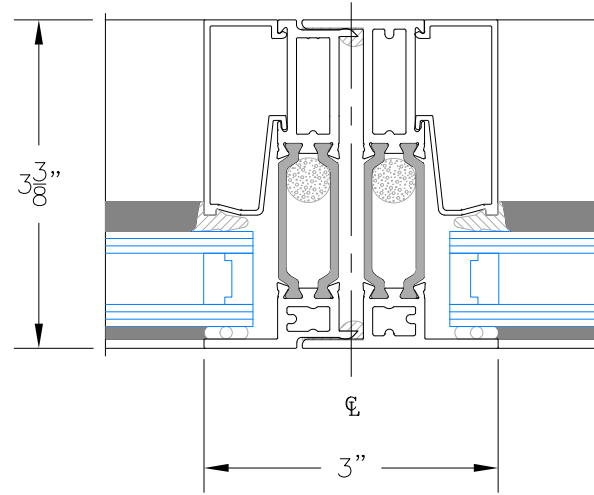
6 Vertical Vent Stack



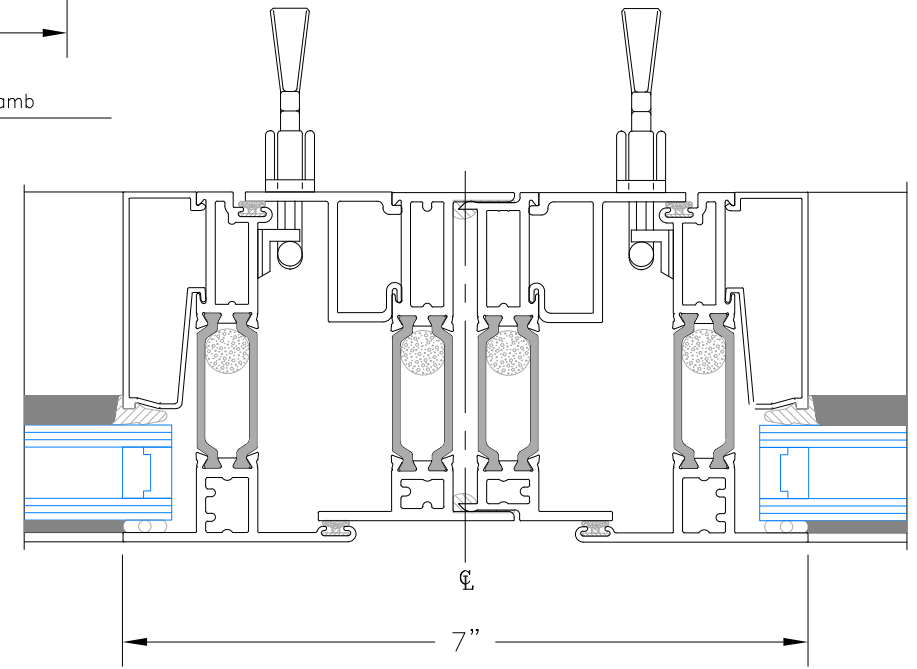
7 Vent Jamb



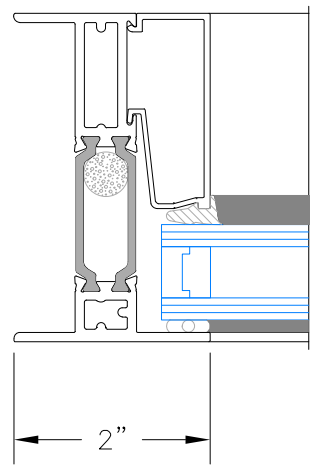
8 Vertical Mullion



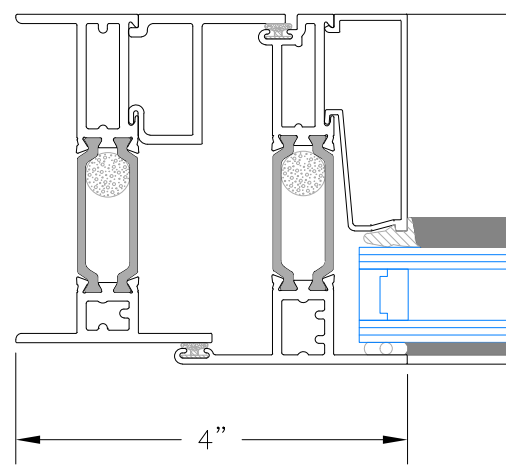
10 Vertical Stack



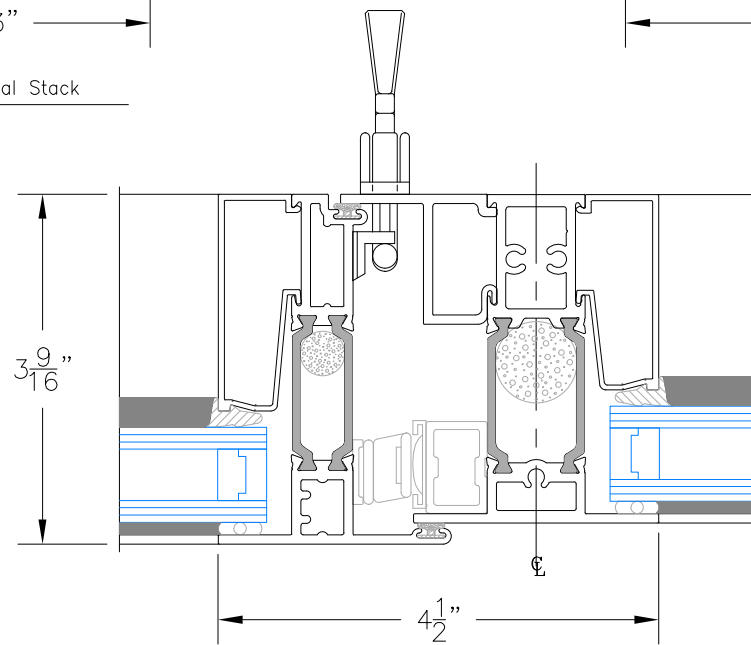
11 Vertical Stack w/P.O. Adap.



14 Jamb



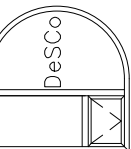
15 Vent Jamb w/P.O. Adap.

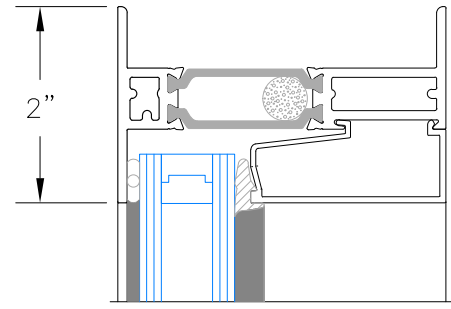
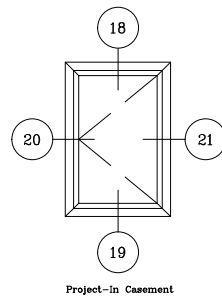
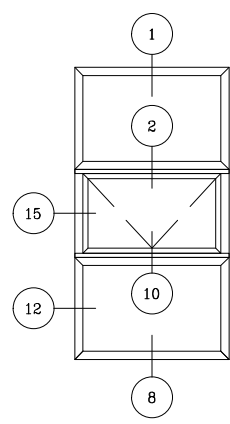
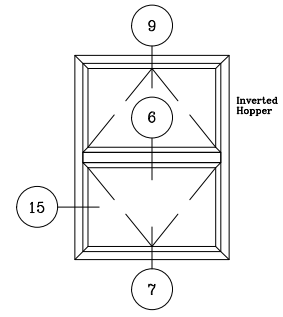
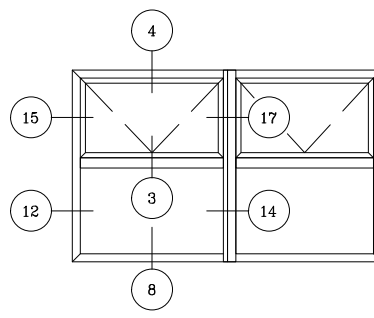
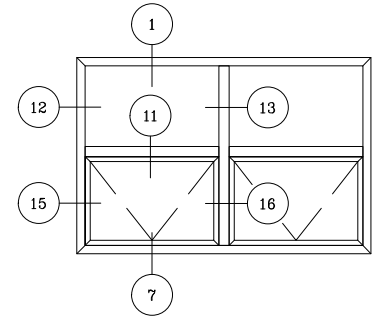
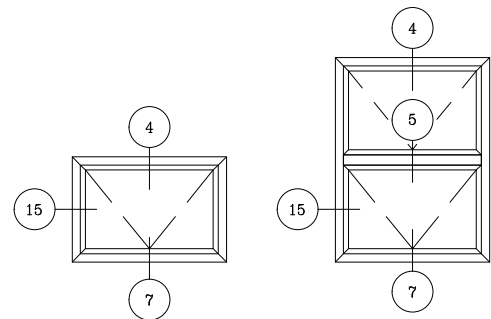


16 Vent Mullion w/P.O. Adap.

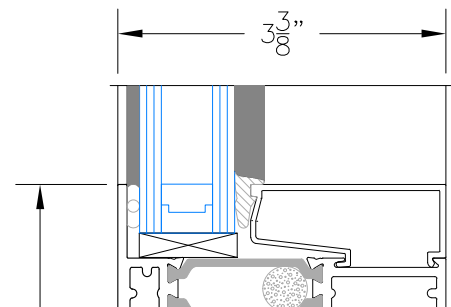
i85 SERIES THERMAL WINDOW  
CASEMENT

DeSCO Architectural, Inc.  
716 3rd Street SE  
De Smet, SD 57231  
Ph. 605-854-9126 Fax: 605-854-9127  
800-952-5534  
www.descoar.com

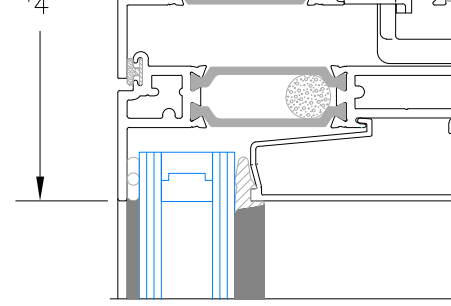




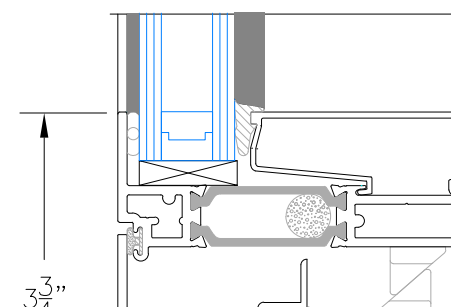
1 Head



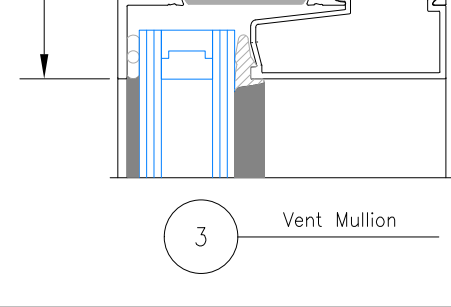
2 Horizontal Mullion Stack



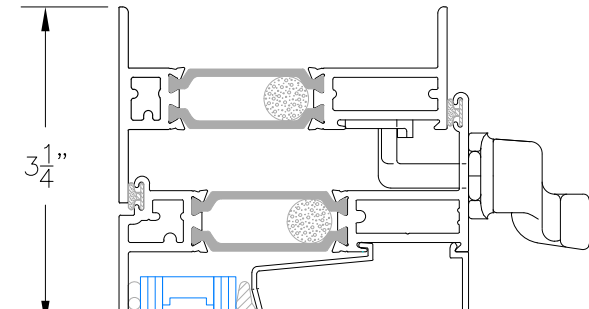
3 Vent Mullion



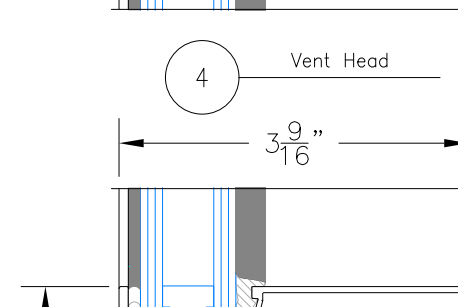
4 Vent Head



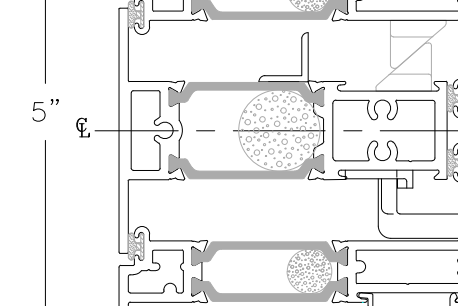
5 Vent Mullion



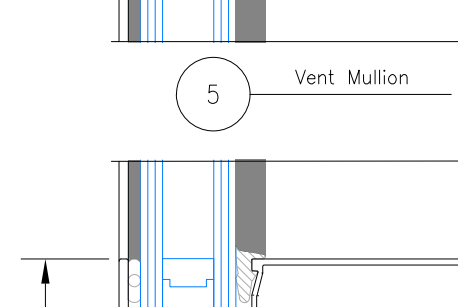
4 Vent Head



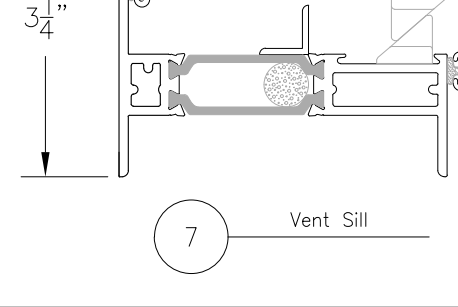
5 Vent Mullion



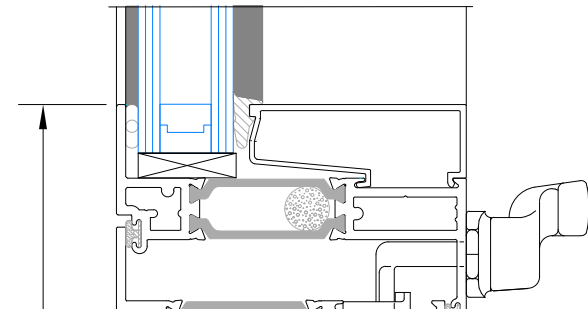
6 Vent/Vent Mullion



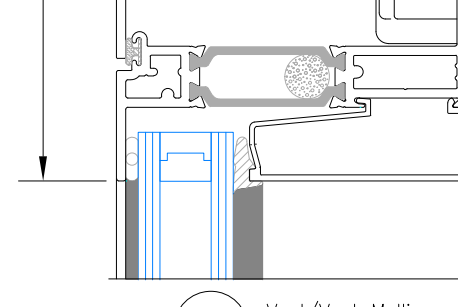
7 Vent Sill



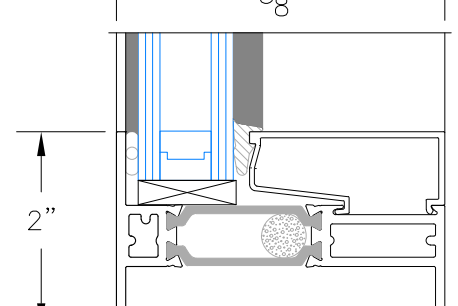
8 Sill



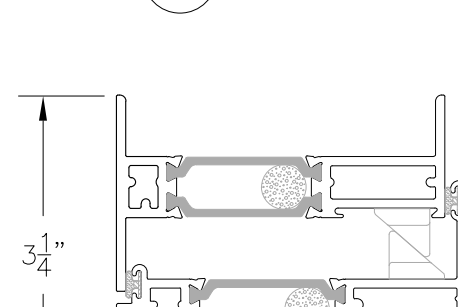
6 Vent/Vent Mullion



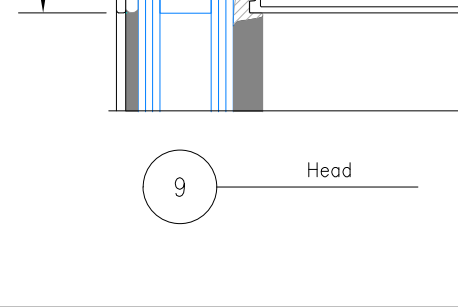
8 Sill



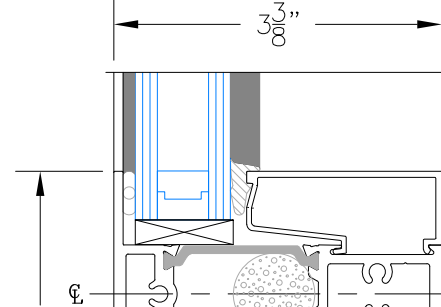
9 Head



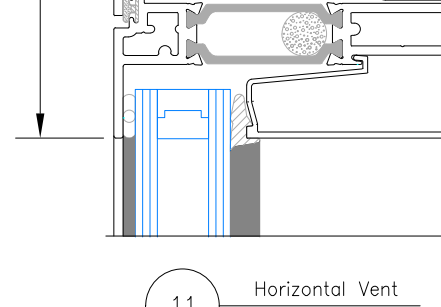
9 Head



10 Horizontal Vent Stack



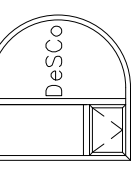
11 Horizontal Vent

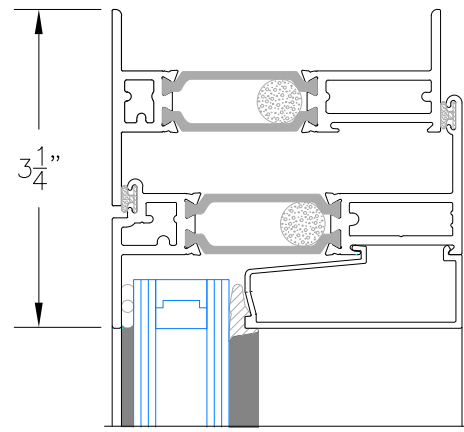


11 Horizontal Vent

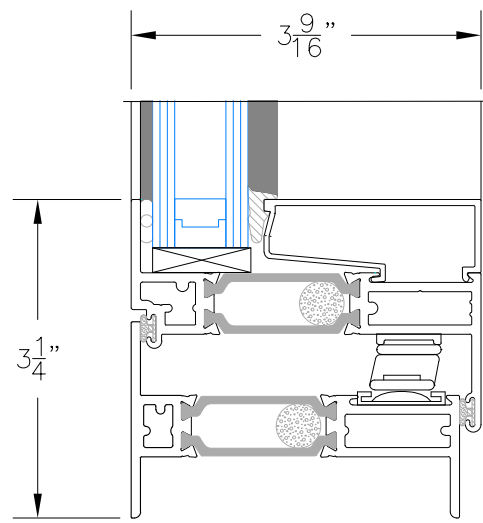
i85 SERIES THERMAL WINDOW  
PROJECT-IN

DeSCO Architectural, Inc.  
716 3rd Street SE  
De Smet, SD 57231  
Ph: 605-854-9126 Fax: 605-854-9127  
800-952-5534  
www.descoarc.com

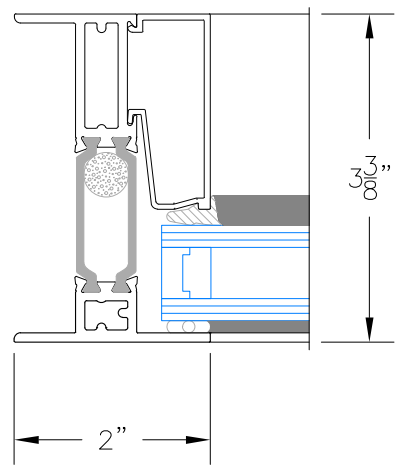




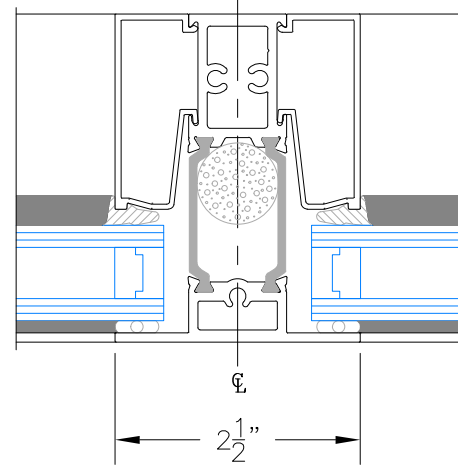
18 Vent Head



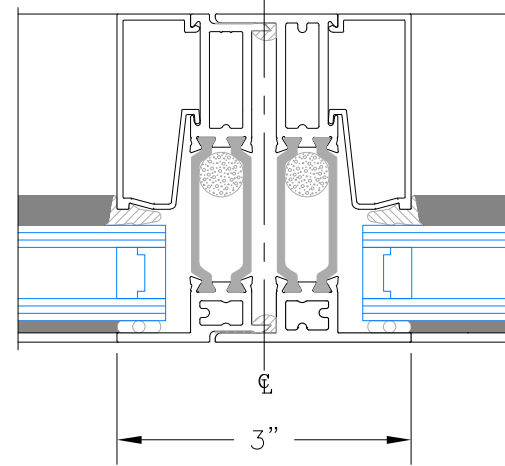
19 Vent Sill



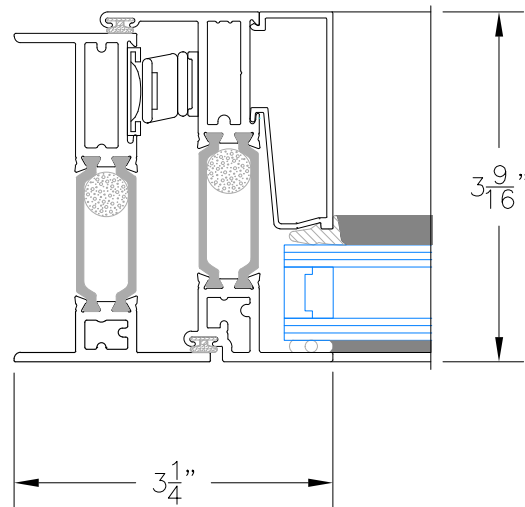
12 Jamb



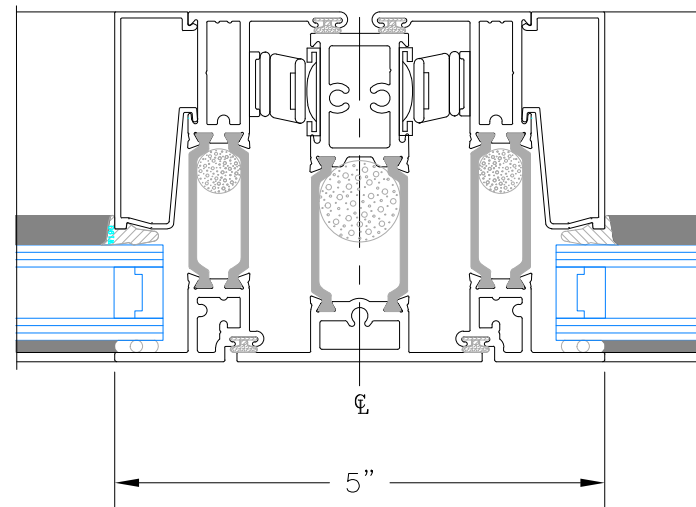
13 Vertical Mullion



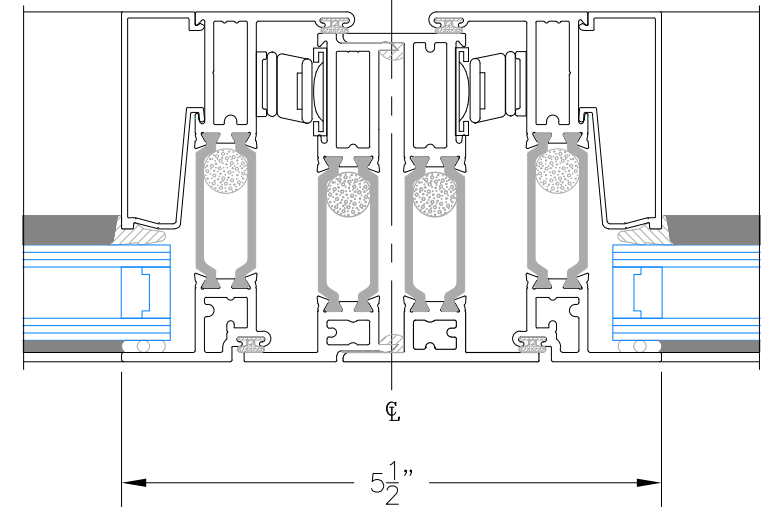
14 Vertical Stack



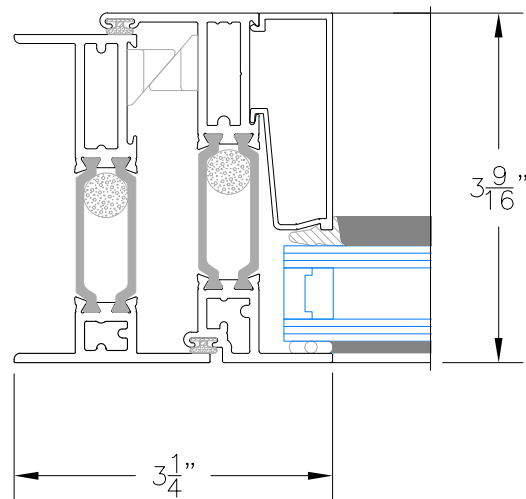
15 Vent Jamb



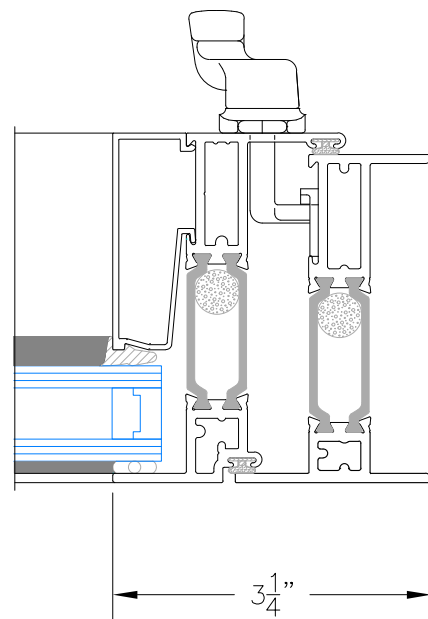
16 Vertical Vent Mullion



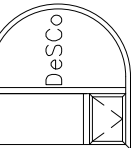
17 Vertical Stack



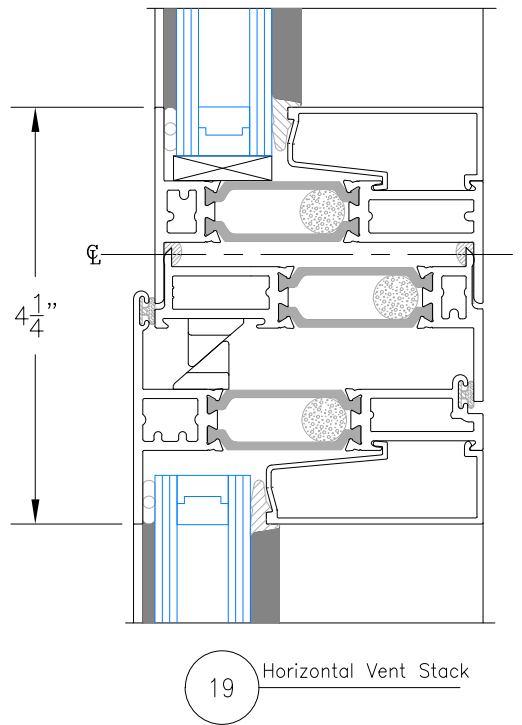
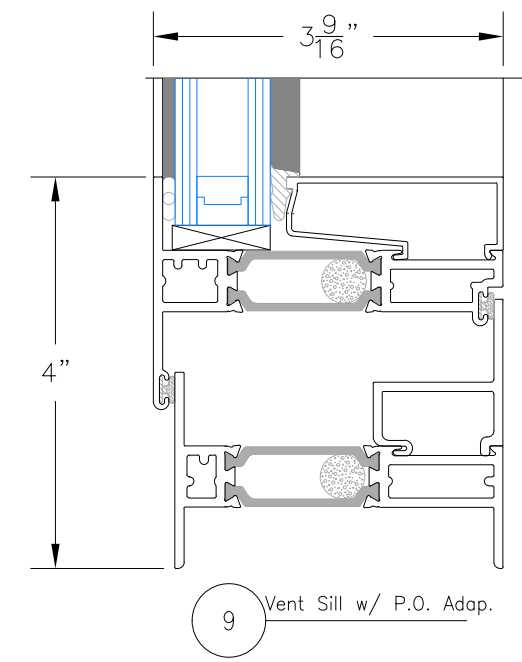
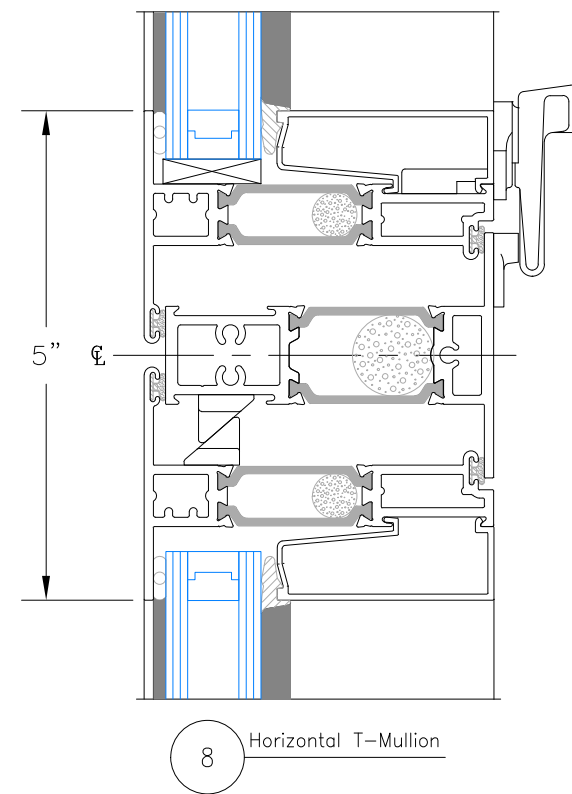
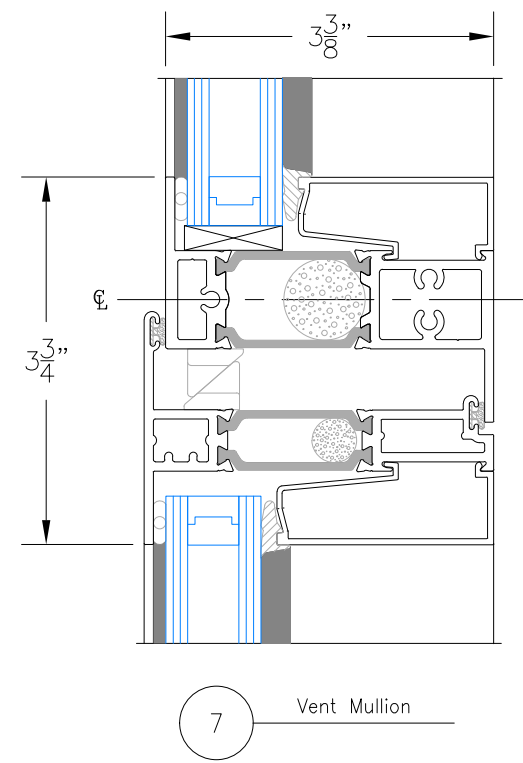
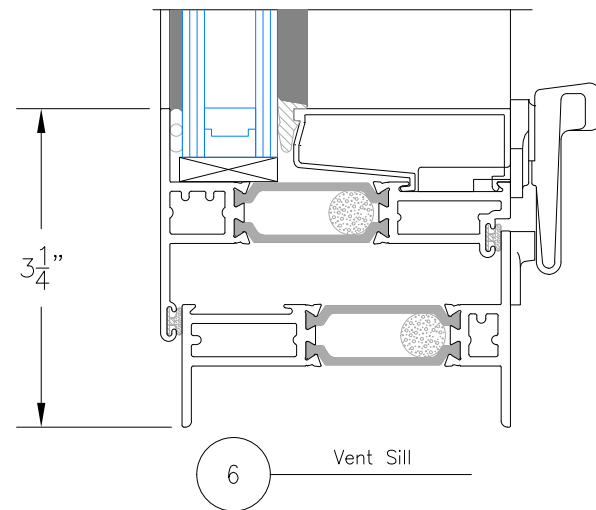
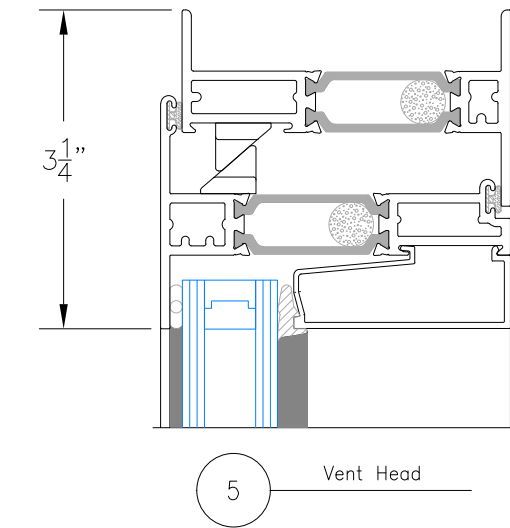
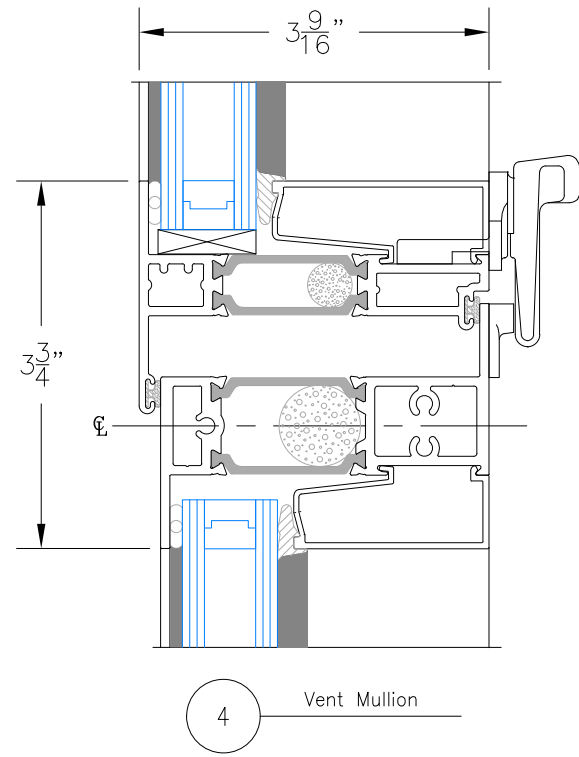
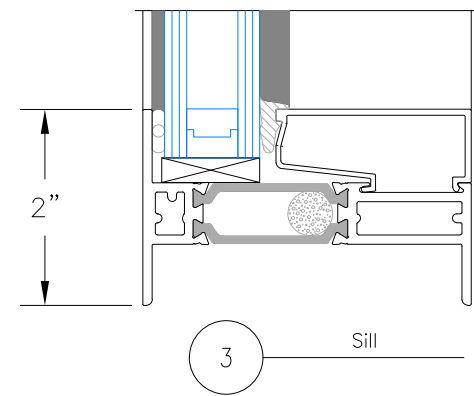
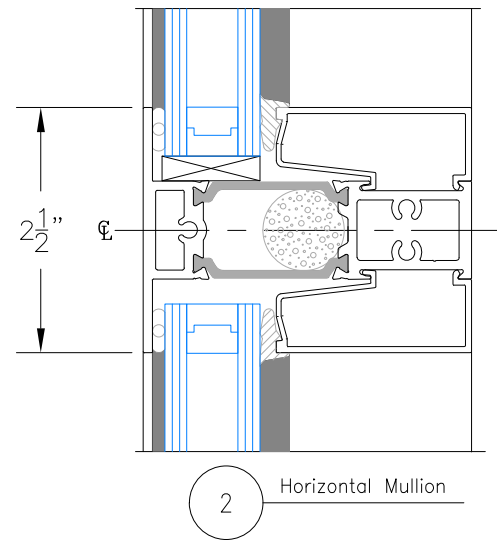
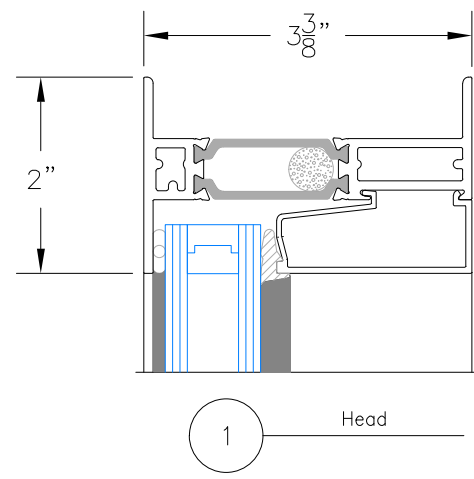
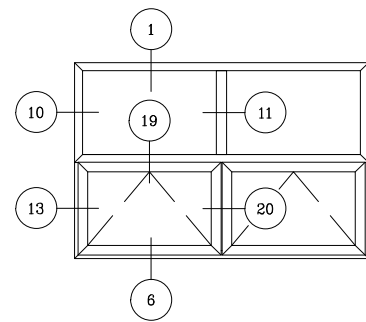
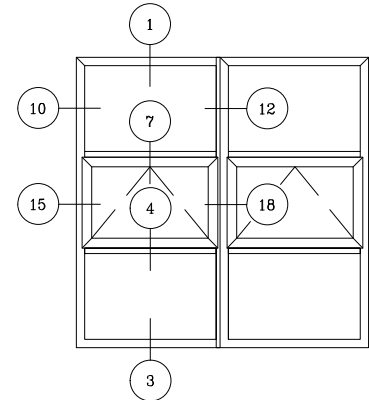
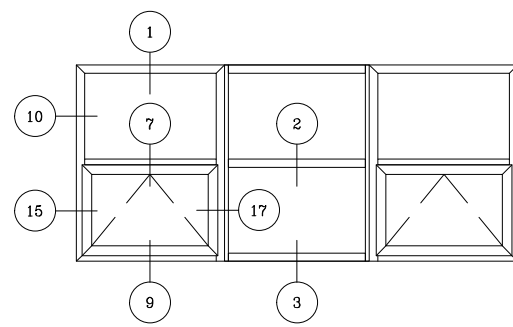
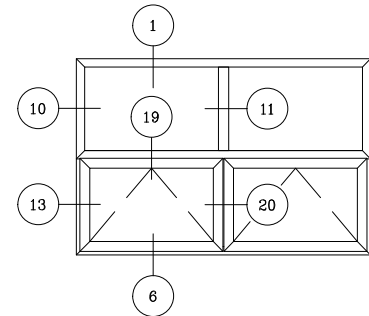
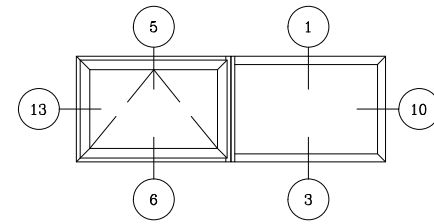
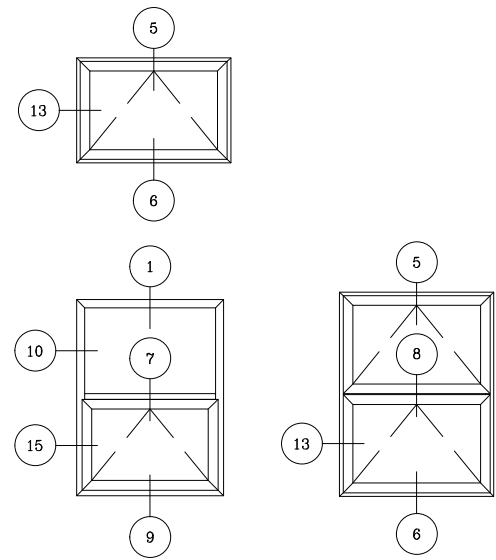
20 Vent Jamb



21 Vent Jamb

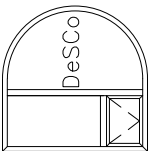


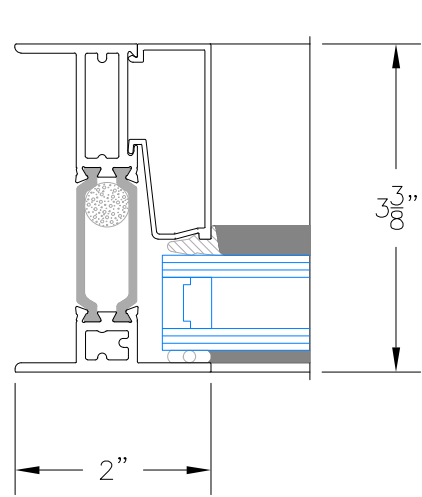




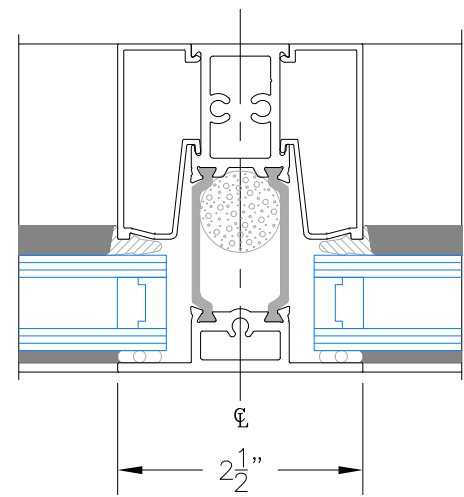
i85 SERIES THERMAL WINDOW  
PROJECT-OUT

DeSCo Architectural, Inc.  
716 3rd Street SE  
De Smet, SD 57231  
Ph. 605-854-9126 Fax: 605-854-9127  
800-952-5534  
www.descoarc.com

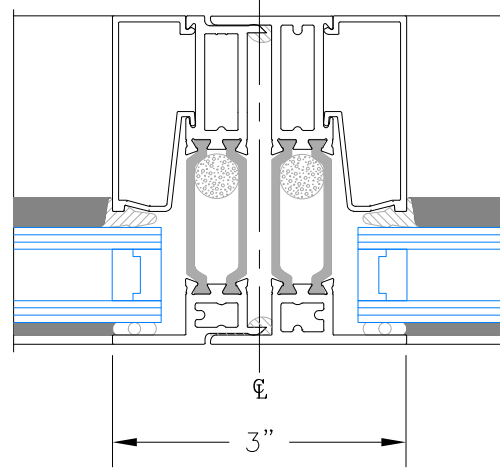




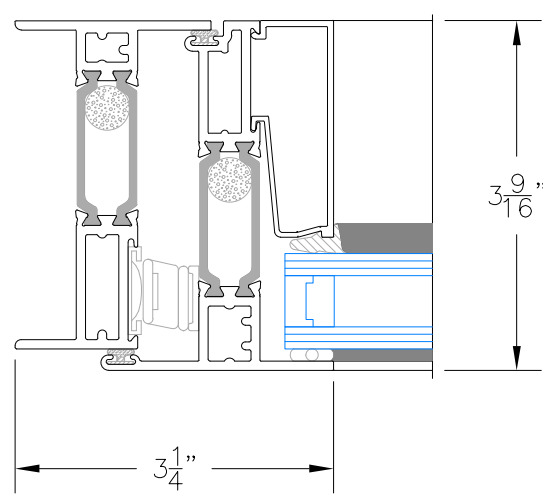
10 Jamb



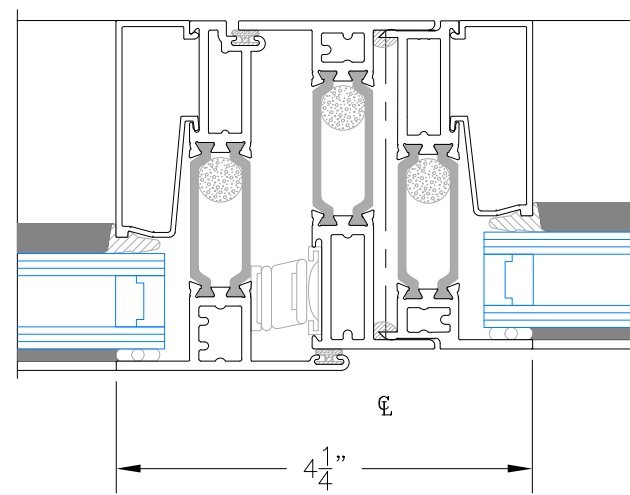
11 Vertical Mullion



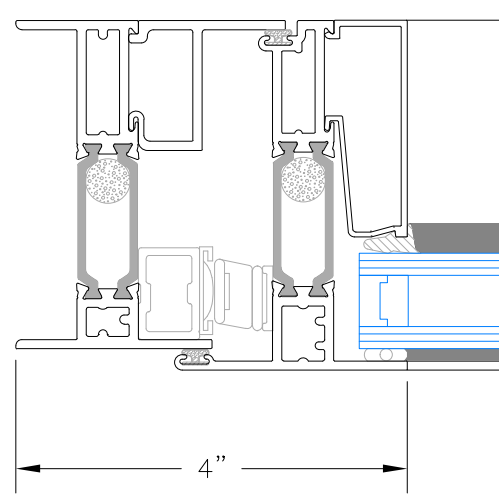
12 Vertical Stack



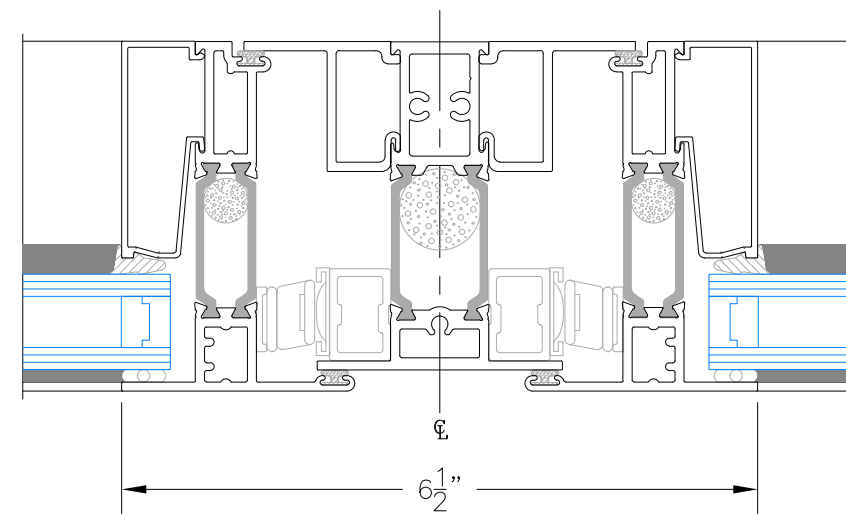
13 Vent Jamb



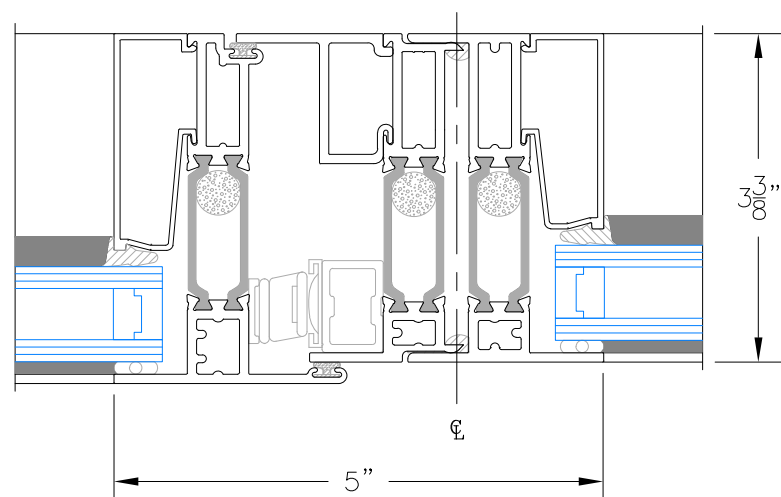
14 Vertical Vent Stack



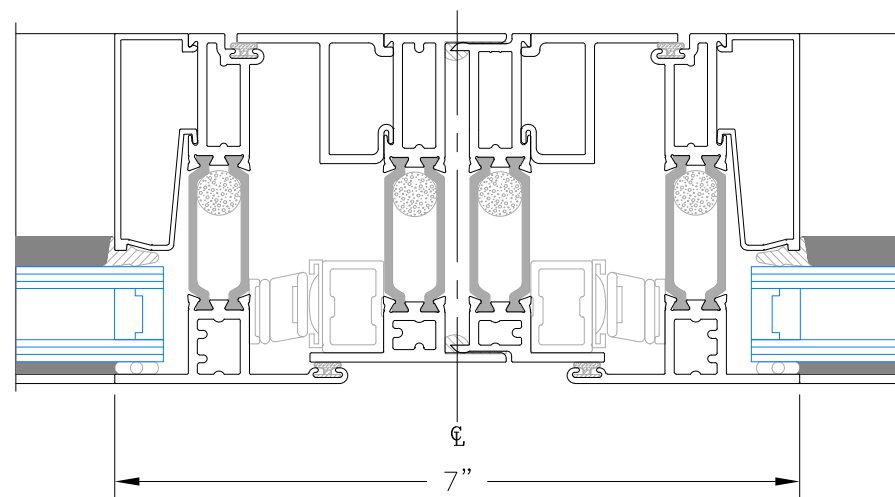
15 Vent Jamb w/P.O. Adap.



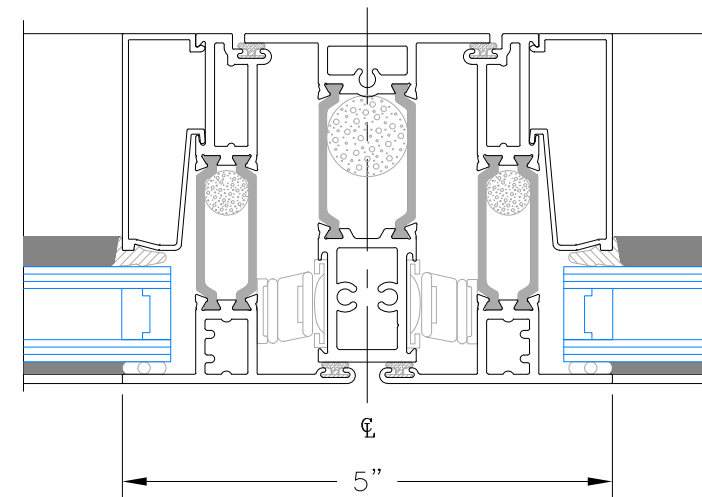
16 Vent Mullion w/P.O. Adap.



17 Vertical Stack w/P.O. Adap.



18 Vertical Stack w/P.O. Adap.



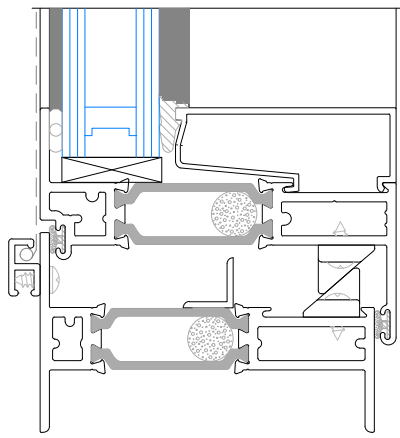
20 Vertical Mullion

i85 SERIES THERMAL WINDOW  
PROJECT-OUT

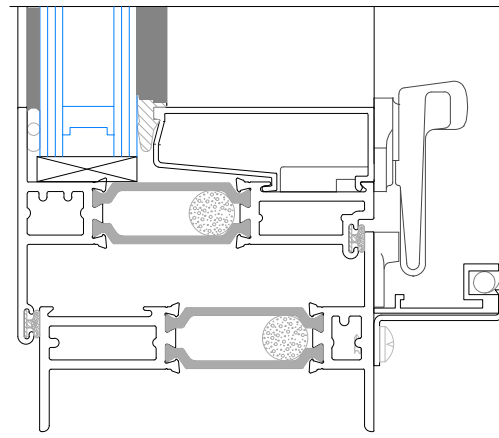
DeSCO Architectural, Inc.  
716 3rd Street SE  
De Smet, SD 57231  
Ph: 605-854-9126 Fax: 605-854-9127  
800-952-5534  
www.descoarc.com



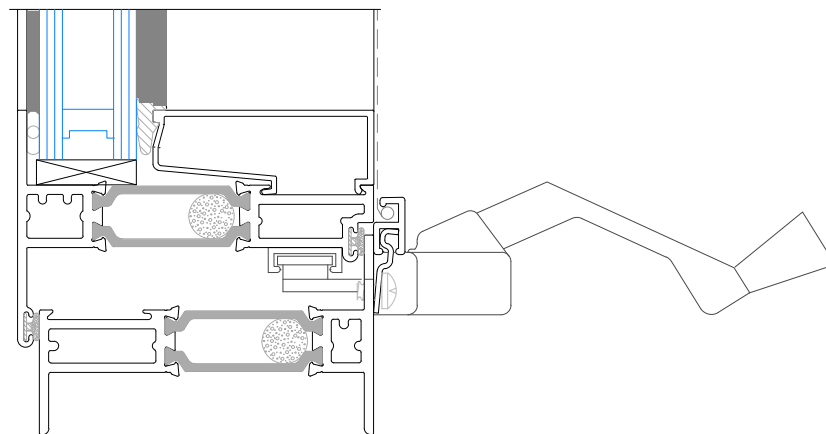
185 SERIES ACCESSORIES



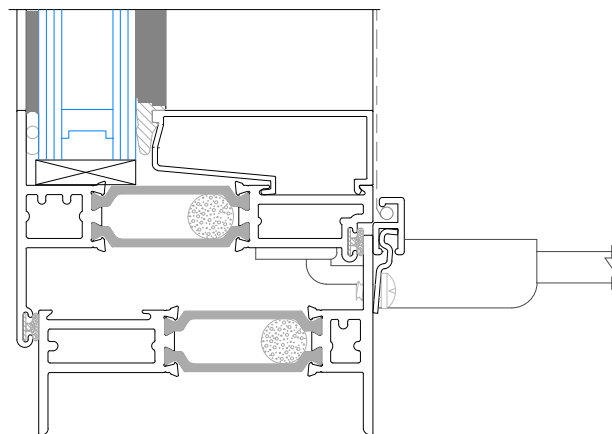
Project-In  
Screen



Project-Out  
Wicket Screen  
W/Cam Handle



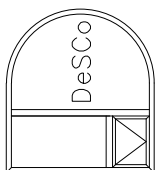
Project-Out  
Screen  
W/Roto  
Operator



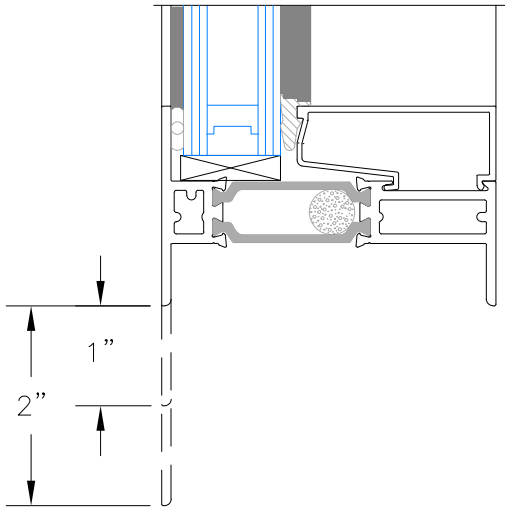
Project-Out  
Screen  
W/Pushbar

Scale: Half Scale

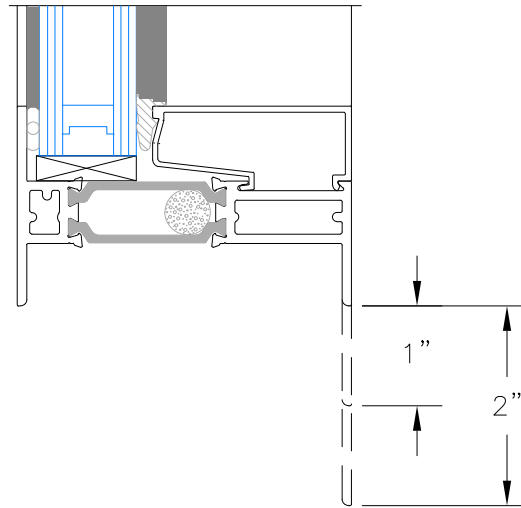
DeSCO Architectural, Inc.  
716 3rd Street SE  
De Smet, SD 57231  
Ph. 605-854-9126 Fax: 605-854-9127  
800-952-5534  
www.descoarc.com



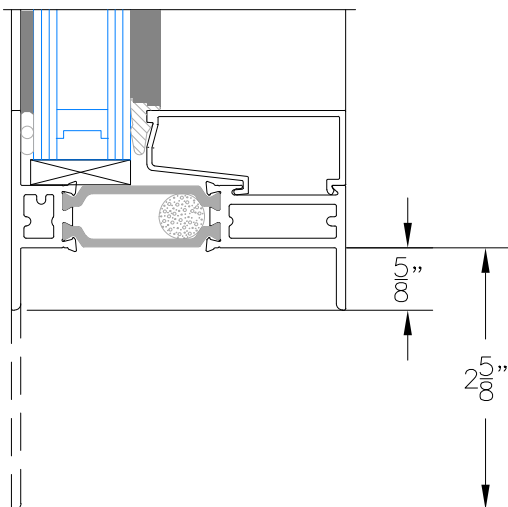
Exterior  
Unequal Leg  
Options



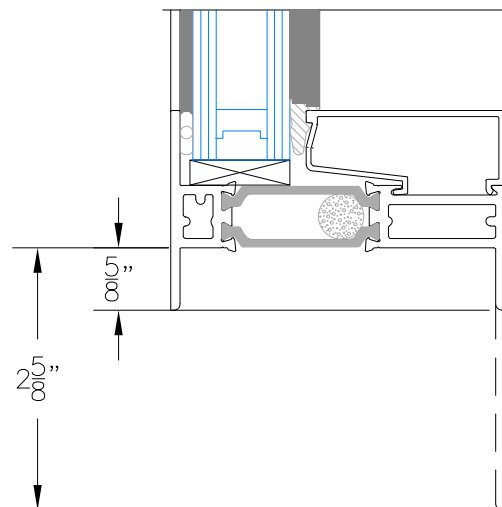
Interior  
Unequal Leg  
Options



Exterior  
Unequal Leg  
Options



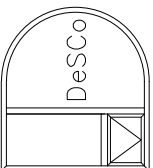
Interior  
Unequal Leg  
Options

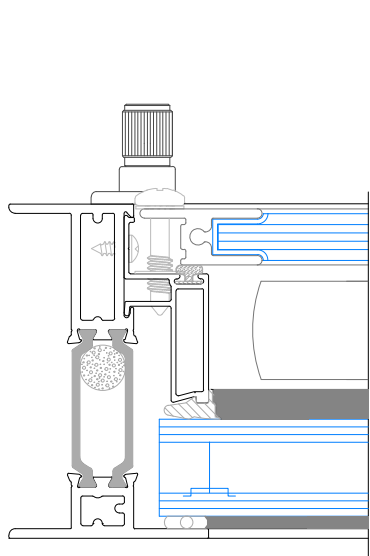


Scale: Half Scale

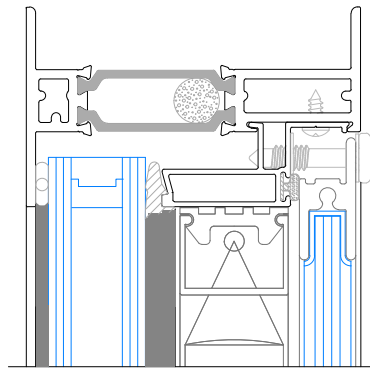
185 SERIES ACCESSORIES (Con't)

DeSCO Architectural, Inc.  
716 3rd Street SE  
De Smet, SD 57231  
Ph. 605-854-9126 Fax: 605-854-9127  
800-952-5534  
www.descoarc.com

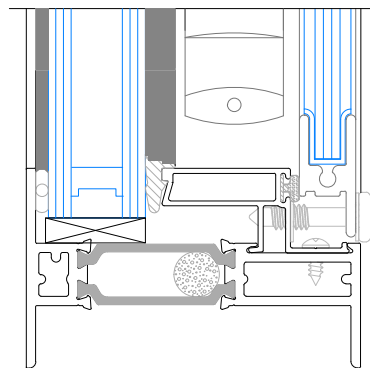




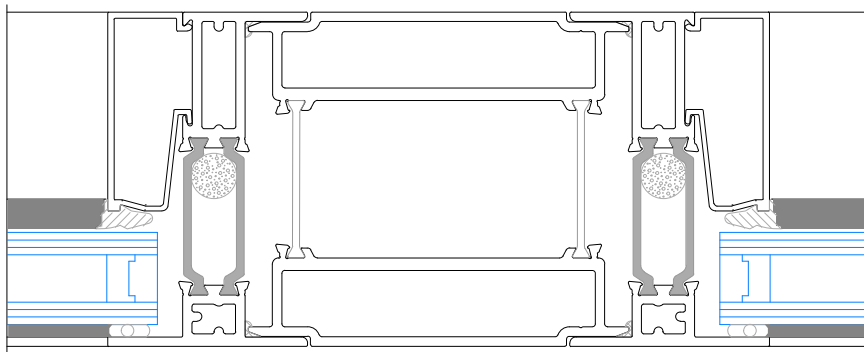
i85 Series  
With Blinds  
Jamb Detail



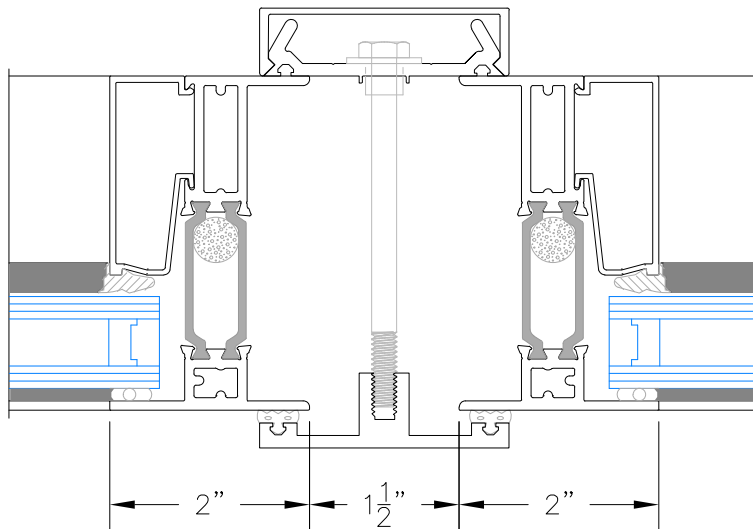
i85 Series  
With Blinds  
Head Detail



i85 Series  
With Blinds  
Sill Detail



Wide Mullion

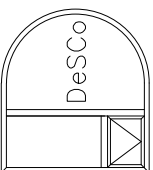


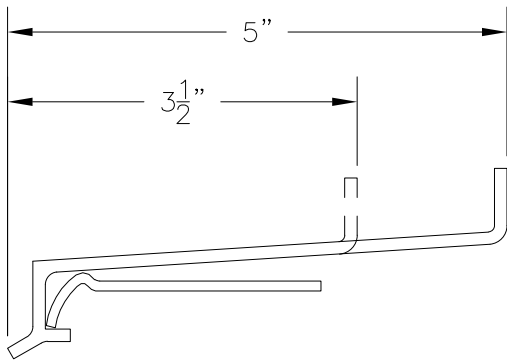
2 Piece Mullion Cover

Scale: Half Scale

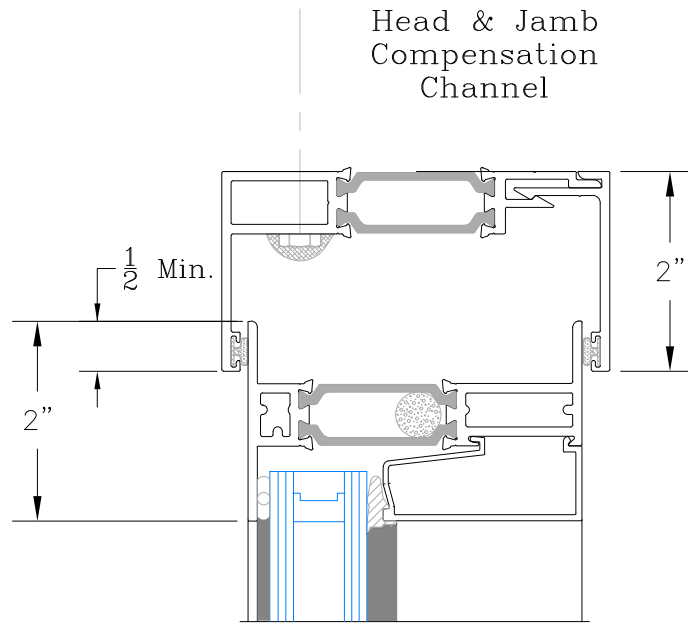
185 SERIES ACCESSORIES (Con't)

DeSCO Architectural, Inc.  
716 3rd Street SE  
De Smet, SD 57231  
Ph. 605-854-9126 Fax: 605-854-9127  
800-952-5534  
www.descoarc.com

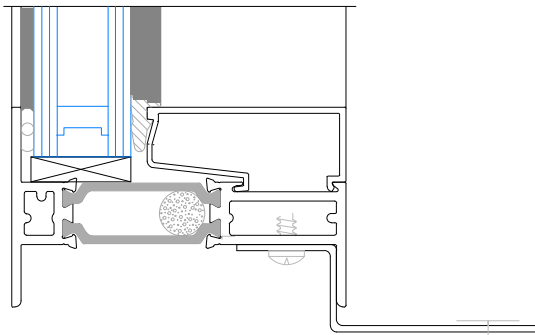




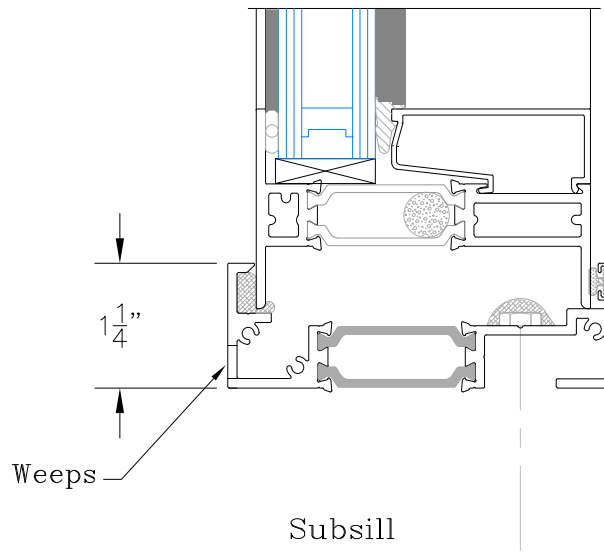
Extruded Sill



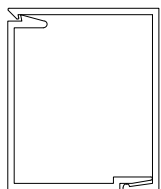
Head & Jamb Compensation Channel



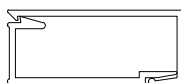
Strap Anchor



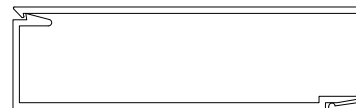
Subsill



1 1/2" x 1 3/4"  
Snap Trim



1 3/4" x 3/4"  
Snap Trim

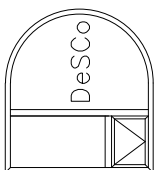


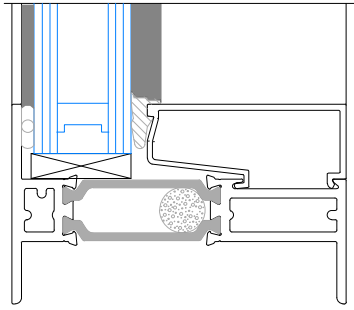
3 1/2" x 1"  
Snap Trim

Scale: Half Scale

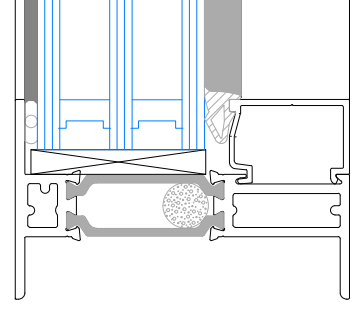
185 SERIES ACCESSORIES (Con't)

DeSCO Architectural, Inc.  
716 3rd Street SE  
De Smet, SD 57231  
Ph: 605-854-9126 Fax: 605-854-9127  
800-952-5534  
www.descoarc.com

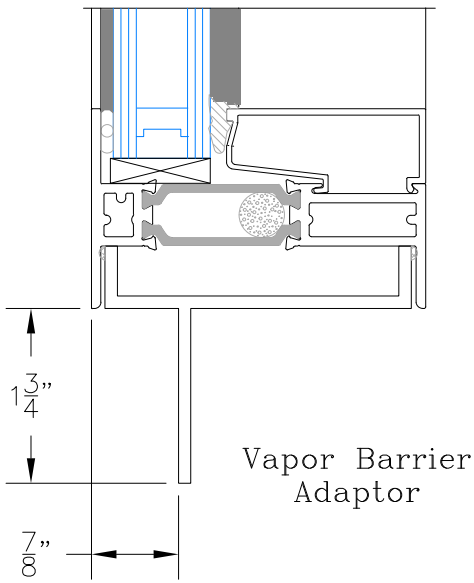




1" Glazing



1.75" Glazing



185 SERIES ACCESSORIES (Con't)

DeSCO Architectural, Inc.  
 716 3rd Street SE  
 De Smet, SD 57231  
 Ph. 605-854-9126 Fax: 605-854-9127  
 800-952-5534  
 www.descoarc.com

